

**1 - TECHNICAL SPECIFICATIONS**

**A. GAS NAILER**

Model No.	EF200HDLi	
Dimensions		
Length	565 mm	
Height	350 mm	
Width	120 mm	
Weight	4.07 kg	
Recommended Usage	600/Hr	3,000/Day

**Noise**

$L_{pA,1s}$	= 97 ± 2dB (A)
$L_{pC,peak}$	= 130 ± 2dB (C)
$L_{pA,1s}$	= 91 ± 2dB (A)
$L_{WA,1s}$	= 104 ± 2dB (A)

**Vibration**

The vibration/mechanical impact risk is low, it is the users' responsibility to ensure that the operators are not put at risk due to environmental and work piece specifications.

**B. FUEL CELL**

Model No.	FC165
Dimensions	
Height	165 mm
Diameter	32 mm

Fuel cell contains pre-mixed fuel and lubrication. No extra lubrication required.

**Warning!** Only specified Fuel Cell and Lubricant by ERGOFAST can be used on the tools, please consult the ERGOFAST agents or local distributors.

**C. FASTENER**

Dimensions	
Insulation Thickness	25-200 mm
Pin Head Diameter	Ø6.3 mm
Pin Length	47-52 mm

Applications	
Insulation Thickness	25-200 mm

Only those fasteners which are specified in this specification shall be used in ERGOFAST Gas Tools. The ERGOFAST Gas Tool and the fasteners specified are to be considered as one unit safety system.

The charger and the battery are designed to operate together as one system.

**D. BATTERY CHARGER**

Art. No.	RLC07220
Input	100-240V ~ 50/60Hz
Output	7.2V = 2.0A
Charging Time	1 Hour
Battery Type	Ergofast RBL-07220

**E. BATTERY**

Art. No.	RBL-07220
Output	7.2V =
Capacity	2.0Ah / 14.4Wh

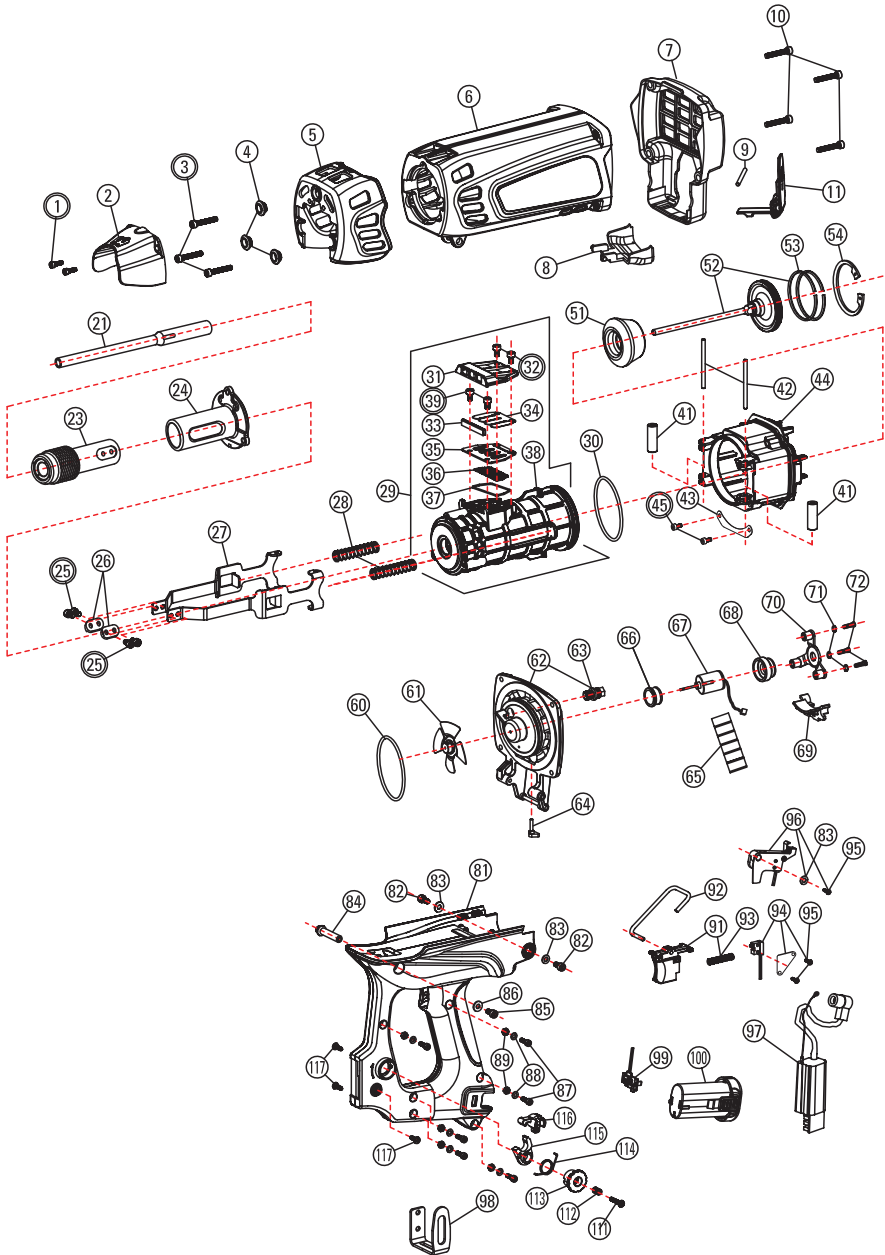
**2 - TOOL SERIAL NUMBER**

Located on the tool handle near the track connection.

08 YY MM 18 XXXX

- 08 - Ergofast
- YY - Year of construction (last two digits)
- MM - Month of construction
- 18 - Model Type
- XXXX - Tool serial number

**3 - PARTS LIST**



POS.	CODE	DESCRIPTION
1	90 412 1	SOCKET SCREW
2	17 006 0	CAP
3	90 525 1	SOCKET SCREW
4	01 005 0	BUSHING
5	17 009 0	SHEILD
6	17 306 0	HOUSING
7	18 307 0	HEAD COVER
8	18 011 0	BOTTOM COVER
9	90 446 8	STEEL PIN
10	90 530 1	SOCKET SCREW
11	18 311 0	FUEL DOOR
21	59 001 1	PIN GUIDE (G2)
23	59 322 0	GUIDE SLEEVE
24	59 011 0	NOSEPIECE
25	90 512 1	SOCKET SCREW
26	59 015 0	ARM CONNECTOR
27	17 016 0	CHAMBER ARM
28	17 026 0	CHAMBER SPRING
29	17 329 0	CYLINDER ASM
30	17 024 0	CYLINDER RING
31	17 023 0	VALVE COVER
32	90 510 1	SOCKET SCREW
33	17 018 0	FILTER
34	17 022 0	REED
35	17 021 0	VALVE PLATE
36	17 020 0	PERFRORATED PLATE
37	17 019 0	SEALING RING
38	17 017 0	CYLINDER BODY
39	90 508 1	SOCKET SCREW
41	17 031 0	RUBBER SLEEVE
42	90 458 8	STEEL PIN
43	17 034 0	CHAMBER PLATE
44	17 344 0	CHAMBER
45	90 408 1	SOCKET SCREW
51	17 025 0	BUMPER
52	59 352 1	PISTON (G2)
53	17 028 0	PISTON RING
54	17 029 0	RETAINING RING
60	17 038 0	HEAD RING
61	01 062 0	BLADE ASSEMBLY (M1, M4)
62	18 362 0	HEAD ASSEMBLY (M1, M4)

POS.	CODE	DESCRIPTION
63	01 065 0	SPARK PLUG
64	17 048 0	FUEL NOZZLE
65	01 067 0	MOTOR SLEEVE
66	17 042 0	MOTOR BUMPER (M1, M3, M4)
67	17 043 0	MOTOR (M1)
68	17 044 0	MOTOR GUIDE (M1, M3, M4)
69	17 049 0	CONNECTOR HOLDER
70	17 045 0	MOTOR HOLDER (M1, M3, M4)
71	90 407 5	SPRING WASHER
72	90 420 2	ROUND HEAD SCREW
81	18 381 0	HANDLE HOUSING
82	90 520 1	SOCKET SCREW
83	90 510 5	WASHER
84	17 384 0	BUSHER
85	90 514 1	SOCKET SCREW
86	90 512 5	WASHER
87	90 414 1	SOCKET SCREW
88	90 409 5	WASHER
89	90 400 6	LOCKNUT
91	17 391 0	TRIGGER
92	17 078 0	CHAMBER STOP
93	17 076 0	TRIGGER SPRING
94	17 394 1	TRIGGER SWITCH (S1)
95	90 309 3	SELF TAP SCREW
96	17 396 1	MOTOR SWITCH (S1)
97	17 072 0	CONTROL UNIT
98	17 083 0	HOOK
99	17 071 0	BATTERY HOLDER
100	17 102 0	BATTERY (B1)
111	90 425 3	SELF TAP SCREW
112	17 069 0	SPRING
113	17 068 0	KNOB
114	17 067 0	SPRING
115	17 066 0	TRACK LOCK
116	17 065 0	TRACK LATCH
117	90 410 3	SELF TAP SCREW